

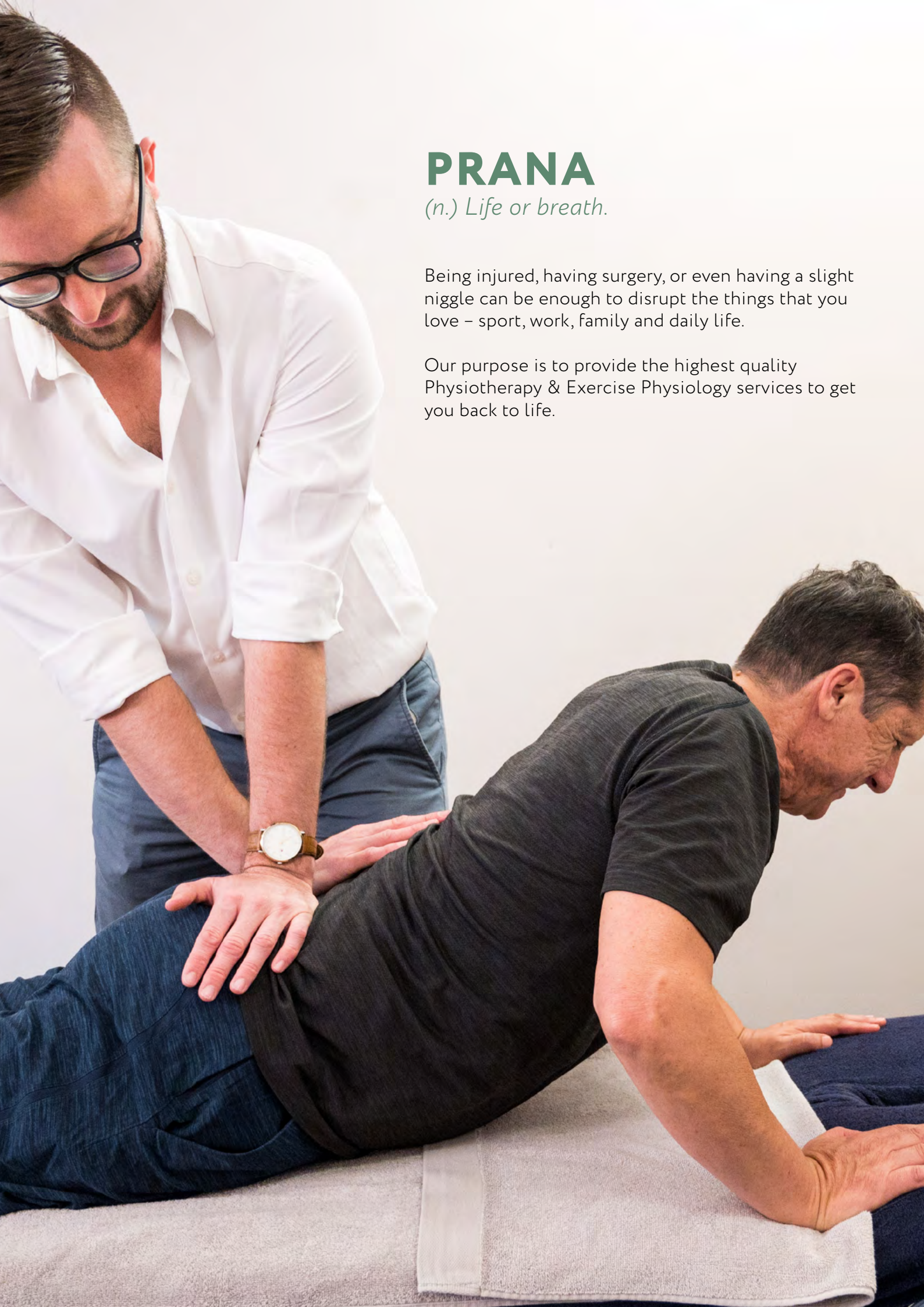


PRANA

PHYSIOTHERAPY & HEALTH

WELCOME DOCUMENT





PRANA

(n.) Life or breath.

Being injured, having surgery, or even having a slight niggle can be enough to disrupt the things that you love – sport, work, family and daily life.

Our purpose is to provide the highest quality Physiotherapy & Exercise Physiology services to get you back to life.



MEET THE TEAM



VALERIE MULLANE

Principal Physiotherapist
Credentialled McKenzie
Therapist
Exercise Physiologist



SHAUN MILLER

Principal Physiotherapist
Credentialled McKenzie
Therapist
Exercise Physiologist



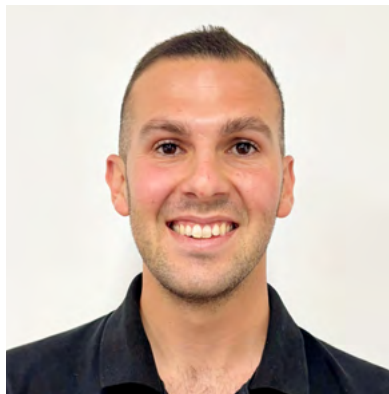
DANICA OADES

Senior Physiotherapist
Clinical Pilates Instructor



SOFIE FRENCH

Physiotherapist
Clinical Pilates Instructor
McKenzie Therapist



CHRISTIAN BOSEVSKI

Physiotherapist



DASUNI SOMARATNE

Accredited Exercise Physiologist
Clinical Pilates Instructor



DR HELEN CLARE

Specialist Musculoskeletal
Physiotherapist
Credentialled McKenzie Therapist



JENNY COOLICAN

Lymphoedema Massage
Therapist



LYNDA EAGER

Practice Manager



OUR SERVICES

EXERCISE PHYSIOLOGY



At Prana Physiotherapy & Health, we cater to a diverse range of individuals, embracing a personalised approach to support you on your unique health journey. Our Accredited Exercise Physiologists (AEP) collaborate closely with you to design a tailored exercise program that aligns with your unique needs and goals. Whether you're recovering from an injury, managing a chronic condition, aiming for a healthier lifestyle, or specifically seeking care through Workers' Compensation, motor vehicle accident (CTP), NDIS or the Department of Veterans' Affairs (DVA), we've got you covered.

This encompasses factors such as mental health and lifestyle, ensuring a comprehensive and sustainable impact. Rest assured, our exercise programs are built on a foundation of evidence-based practices, backed by the latest research, providing you with the most effective and up-to-date guidance for your journey to better health.

Get Started with Exercise Physiology



Initial Assessment



**Personalised
Exercise Plan**



Ongoing Support



Group Classes

Please feel free to call us on (02) 9436 2565 or send us an email for any enquiries regarding Exercise Physiology. You can also book an appointment online at www.pranaphysio.com.au/book



EXERCISE PHYSIOLOGY CONSULTATIONS

INITIAL CONSULTATION (CODE 102)

UP TO 50MINS

Your first consultation with an Accredited Exercise Physiologist (AEP) for up to 50 minutes. The Accredited Exercise Physiologist will assess you and this consultation may involve exercise.

SHORT SUBSEQUENT CONSULTATION (CODE 202)

UP TO 25MINS

A 25 minute consultation consisting typically of exercise and/or rehabilitation exercises.

SUBSEQUENT CONSULTATION (CODE 302)

UP TO 50MINS

A 50 minute consultation consisting typically of exercise and/or rehabilitation exercises. Recommended for a complex condition, or for two areas that need treatment.

INITIAL EXERCISE CONSULTATION (CODE 102)

UP TO 50MINS

For new and existing clients wishing to join Strength, Bones & Balance, Clinical Pilates or duet exercise sessions. Includes a thorough assessment of whole body fitness, assessment and development of both in-clinic and home exercise program.

PRIVATE 1:1 CLINICAL EXERCISE CONSULT (CODE 202/302)

25 OR 50MINS

1:1 Exercise session led by an Accredited Exercise Physiologist. This can be for exercise rehabilitation, clinical pilates, or private Strength, Bones & Balance session.

DUET 1:1 CLINICAL EXERCISE CONSULT (CODE 502)

25 OR 50MINS

2:1 Exercise session led by an Accredited Exercise Physiologist. This can be for exercise rehabilitation, clinical pilates, or private Strength, Bones & Balance session.

GROUP CLINICAL EXERCISE (CODE 502)

UP TO 50MINS

Semi Private Clinical Exercise led by an Accredited Exercise Physiologist with maximum 4 people per class. This code is for both our Strength, Bones & Balance and Clinical Pilates classes.



OUR SERVICES

PHYSIOTHERAPY



At Prana Physiotherapy & Health, we offer a range of physiotherapy treatments for disorders of the musculoskeletal system. We employ Australia's most experienced McKenzie-trained physiotherapists who can provide an expert opinion on the most effective management for spinal and extremity symptoms.

We aim to provide all patients with prompt and thorough assessment, diagnosis and treatment of sports injuries as well as muscle pain, joint and nerve pain. Our physiotherapists are able to create customised self management and injury prevention exercise programs to aid in recovery and ongoing health of your body.

HOW CAN OUR PHYSIOTHERAPIST'S HELP YOU?

Our highly skilled Musculoskeletal Physiotherapists specialise in the identification and treatment of people with cervicogenic dizziness, neck pain, headaches and jaw (TMJ) problems. We also treat the following conditions:

- Back pain
- Neck pain
- Headaches & migraines
- Muscle and joint pain
- Pelvic pain & sacroiliac joint pain (SIJ)
- Acute or chronic injury
- Postural problems
- Chronic or persistent pain
- Sports injuries
- Running related injuries and assessment
- Work related injuries
- Motor vehicle accidents
- Pre & post operative rehabilitation



OUR PHYSIOTHERAPY SERVICES

LIFELONG SPORTS ASSESSMENTS



RUNNING ASSESSMENTS

A running assessment benefits runners with pain, recurring injuries, or those aiming to improve performance and technique. It is also helpful for preventing overuse injuries and maintaining a consistent running program, especially for those new to running.

The consultation includes an assessment of your running style on our treadmill including analysis of your foot strike pattern, stride length and body positioning. Strength and power testing will be performed using our AxIT Strength Technology to objectively assess movement patterns and muscle strength specific to improve running performance and reduce injuries.

You will be provided with a written report which will include the findings from your running assessment and strength testing, an individualised running and exercise program and recommendations on how to further improve your performance and reduce injury. A follow up running assessment may be recommended to track progress so you can overcome injuries, improve your performance and reach your running goals.



AxIT STRENGTH ASSESSMENTS

Have you found your injury rehabilitation or training beginning to stagnate? It could be because you are not training the right areas appropriately. With the AxIT system we can analyse every muscle and movement in the body, creating a unique plan for you to help you achieve your specific goals.

Let us help you take your injury rehabilitation or training to the next level. We choose to use the AxIT system to measure how our clients move, because you can't change what you can't measure. This allows us to set baselines, track progression over time and identify imbalances that may be holding you back from achieving your goals.



PRIVATE HEALTH INSURANCE CODES

INITIAL CONSULTATION (CODE 500)

UP TO 50MINS

Your first consultation with a physiotherapist for up to 50 minutes. The Physiotherapist will assess you and this consultation may involve exercise and/or hands-on treatment. A treatment plan will be created.

SUBSEQUENT CONSULTATION (CODE 505)

UP TO 25MINS

A 25 minute consultation consisting typically of either exercise or hands-on treatment.

EXTENDED SUBSEQUENT CONSULTATION (CODE 506)

UP TO 50MINS

A 40 or 50 minute consultation consisting typically of half exercise and half hands-on treatment. Recommended for a complex condition, or for two areas that need treatment.

INITIAL EXERCISE CONSULTATION (CODE 500)

UP TO 50MINS

For new or existing clients wishing to join Strength, Bones & Balance, Clinical Pilates or duet exercise sessions. Includes a thorough assessment of whole body fitness, assessment and development of both an in clinic exercise program and home exercise program.

PRIVATE 1:1 CLINICAL EXERCISE CONSULT (CODE 505/506)

25 OR 50MINS

1:1 Exercise session led by a Physiotherapist. This can be for exercise rehabilitation, Clinical Pilates, or a private Strength, Bones & Balance session.

DUET 2:1 CLINICAL EXERCISE CONSULT (CODE 560)

UP TO 50MINS

2:1 Exercise session led by a Physiotherapist. This can be for exercise rehabilitation, clinical pilates, or a private Strength, Bones & Balance session.

GROUP CLINICAL EXERCISE (CODE 560)

UP TO 50MINS

Semi Private Clinical Exercise led by a Physiotherapist with maximum 4 people per class. This code is for both our Strength, Bones & Balance and Clinical Pilates classes.



PHYSIOTHERAPY/AEP GROUP CLASS

STRENGTH, BONES & BALANCE

DURATION 50 MINS | MAX 4 PARTICIPANTS



Strength Bones & Balance is a physiotherapy/AEP led circuit-style class for those over 50 who would like to target their bone health, balance, falls risk, muscle strength, posture and core. This class utilises various exercise and physiotherapy equipment to challenge the body and mind. Each individual is working at their own level to achieve their specific goals under close supervision and instruction by their Physiotherapist or AEP.

Strength, Bones & Balance can also be offered as a duet if you would prefer to exercise with a partner or friend at a time that suits you.

Pre attendance requirements

You will need a 50 minute 1:1 Strength Bones & Balance assessment to determine your eligibility and take your history to understand injuries, goals and health status prior to commencing classes. You will commence exercise during this initial session.

Review 1:1 assessments are conducted every four to eight weeks in order to freshen up your program and update your goals based on your progress.



STRENGTH BONES & BALANCE TIMETABLE

Last updated Dec 2025

MONDAY	TUESDAY	WEDNESDAY	THURSDAY	FRIDAY	SATURDAY
7.30am STRENGTH BONES & BALANCE Dasuni	8.00am STRENGTH BONES & BALANCE Shaun			7.30am STRENGTH BONES & BALANCE Shaun	8.00am STRENGTH BONES & BALANCE Christian
	8.30am STRENGTH BONES & BALANCE Christian			8.30am STRENGTH BONES & BALANCE Christian	
9.30am STRENGTH BONES & BALANCE Sofie	9.30am STRENGTH BONES & BALANCE Christian	9.30am STRENGTH BONES & BALANCE Christian	9.30am STRENGTH BONES & BALANCE Christian	9.30am STRENGTH BONES & BALANCE Shaun	
10.30am STRENGTH BONES & BALANCE Shaun		10.30am STRENGTH BONES & BALANCE Christian	10.30am STRENGTH BONES & BALANCE Christian	10.30am STRENGTH BONES & BALANCE Dasuni	
	11.30am STRENGTH BONES & BALANCE Christian			11.30am STRENGTH BONES & BALANCE Christian	
			5.00pm STRENGTH BONES & BALANCE Christian		

STRENGTH BONES & BALANCE – WITH PHYSIOTHERAPIST OR AEP(4:1)

DUET AND PRIVATE STRENGTH BONES & BALANCE WITH PHYSIOTHERAPIST OR AEP BY APPOINTMENT

HOW TO GET STARTED

Schedule an Initial assessment with one of our Physiotherapists or Exercise Physiologists (50 minutes). This allows a thorough assessment and a plan to be developed to set you up ready to join a class. If you need more support or focused attention, we recommend private sessions with your Physiotherapist or AEP. Your Physiotherapist or AEP can talk you through how many 1:1 sessions will be valuable for you.

Review appointments (25 or 50 minutes) are recommended every four to eight weeks, depending on your health goals and injury status.



PHYSIOTHERAPY/AEP GROUP CLASS

CLINICAL PILATES

DURATION 50 MINS | MAX 4 PARTICIPANTS



Our Clinical Pilates classes are a semi-private physiotherapy/AEP led session that utilise the Pilates studio equipment including the reformer, trapeze table, wunda chair and small apparatus to rehabilitate injuries to target specific core, strength and mobility goals. Each individual is working on their own exercises and own program under close supervision and instruction by your Physiotherapist or AEP.

Pre attendance requirements

You will need a 1:1 Clinical Pilates assessment with one of our Physiotherapists or AEPs. Following this we recommend between 2-3 private clinical pilates sessions with your Physiotherapist or AEP prior to joining the class setting to assess, teach foundational movements and plan your program based on individual client goals.

Review 1:1 assessments are conducted every four to eight weeks in order to freshen up your program and update your goals based on your progress.



CLINICAL PILATES TIMETABLE

Last updated Nov 2025

MONDAY	TUESDAY	WEDNESDAY	THURSDAY	FRIDAY	SATURDAY
8.30am CLINICAL PILATES Sofie		8.30am CLINICAL PILATES Dasuni		7.30am CLINICAL PILATES Sofie	8.00am CLINICAL PILATES Valerie
					9.00am CLINICAL PILATES Valerie
	10.30am CLINICAL PILATES Sofie	10.30am CLINICAL PILATES Dasuni		10.30am CLINICAL PILATES Sofie	10.00am CLINICAL PILATES Dasuni
12.30pm CLINICAL PILATES Dasuni	12.30pm CLINICAL PILATES Valerie			12.30pm CLINICAL PILATES Valerie	
	5.00pm CLINICAL PILATES Dasuni	5.00pm CLINICAL PILATES Sofie			
	6.00pm CLINICAL PILATES Sofie				

CLINICAL PILATES – WITH PHYSIOTHERAPIST OR AEP (4:1)

DUET AND PRIVATE CLINICAL PILATES WITH PHYSIOTHERAPIST OR AEP BY APPOINTMENT

HOW TO GET STARTED

Schedule an Initial assessment with one of our Pilates Physiotherapists or Exercise Physiologists (50 minutes). This allows a thorough assessment and a plan to be developed to set you up ready to join a class. If you need more support or focused attention, we recommend private sessions with your Pilates Physiotherapist or AEP. Your Physiotherapist or AEP can talk you through how many 1:1 sessions will be valuable for you.

Review appointments (25 or 50 minutes) are recommended every four to eight weeks, depending on your health goals and injury status.



CANCELLATION POLICY

Prana Physiotherapy & Health has a strict 24 hour cancellation policy for 1:1 or Duet appointments, and a strict 12 hour cancellation policy for Semi-Private Clinical Exercise sessions. For Monday appointments or classes, notice must be given by 12pm Saturdays.

If you miss your appointment, cancel or change your appointment within the 12 hour or 24 hour notice period, you will be charged the full appointment fee.

This policy is in place out of respect for our therapists and clients.

Cancellations with less than 12 hours for classes or 24 hours for 1:1 Physiotherapy or Exercise Physiology are difficult to fill. Giving last minute notice or no notice at all prevents someone else from attending.

Face to face sessions can be changed to zoom sessions or telephone sessions if needed due





PRICING

	DURATION	EXERCISE PHYSIOLOGISTS	PHYSIOTHERAPISTS	SENIOR PHYSIOTHERAPISTS	PRINCIPAL PHYSIOTHERAPISTS & DR HELEN CLARE
PRIVATE CONSULTATIONS	Up to 25 minutes	\$120	\$120	\$130	\$135
	Up to 50 minutes	\$180	\$180	\$220	\$270
DUET 2:1 SESSIONS	Up to 50 minutes	\$90/person	\$90/person	\$110/person	\$135/person
SEMI-PRIVATE CLASSES	50 minutes per session	\$75 casual (6 months expiry) 10 pack \$580 - \$58 per class – Most Popular (6 months expiry) 20 pack \$1040 - \$52 per class (6 months expiry) 30 pack \$1470 - \$49 per class (6 months expiry) <i>Invoices sent after class completed to claim private health rebate</i>			
LIFELONG SPORTS ASSESSMENTS	Up to 50 minutes	\$180	\$180	\$220	\$270

Prana Physiotherapy & Health is a private clinic and a fee for service applies. All duet and semi-private sessions are prepaid at least one day prior to the date of service. All private sessions are to be paid in full on the day of service.

REBATES FROM PRIVATE HEALTH INSURANCE

Everyone's level of cover varies. Check with your insurer for your rebate by quoting Physiotherapy codes (500, 505, 506, 560) or Exercise Physiology codes (102, 202, 302, 502). Bring your card to your consultation so we can claim private sessions on the spot, and you only pay the gap.

Only one Physiotherapy or Exercise Physiology item is claimable per day via Private Health Insurance. We recommend scheduling private consultations (including Clinical Pilates and Strength, Bones & Balance review appointments) and class sessions on different days to maximise your rebate.

REBATES FROM MEDICARE

Your GP may provide an GP Chronic Condition Management Plan, if they deem you are eligible, offering rebates for up to five allied health sessions per year, applicable to Physiotherapy or AEP. Rebates are \$61.80 or 80% of the consult cost if you've passed the Medicare safety net.

Medicare rebates apply only to private consultations, including private clinical exercise or review consultations for Clinical Pilates or Strength, Bones & Balance. They cannot be applied to duet or semi-private sessions. **Please note, we do not bulk bill.**

FUNDING UNDER NDIS, CTP, WORKERS COMPENSATION

Services provided by Physiotherapists or Exercise Physiologists may be funded by the National Disability Insurance Scheme, Compulsory Third Party Insurance or Workers Compensation Insurance. Please reach out to our Reception Team for more information.



FREQUENTLY ASKED QUESTIONS



CLINICAL EXERCISE QUESTIONS

Why do I need to attend an Initial 1:1 Assessment?

This assessment session provides the Physiotherapist or Exercise Physiologist with a thorough history of your health and injuries and run you through the safety requirements to use the various equipment to ensure that you are working at a safe yet challenging level of exercise. We take objective measurements, assess your biomechanics (how you move), teach you the basics of appropriate motor patterns, discuss your goal and start to create the basis of your program. We will formulate a management plan tailored to you.

I am an existing patient of the practice, do I still need an Initial 1:1 Assessment?

Yes, everyone starting Clinical Pilates with Prana, whether they have done it elsewhere or not, will require an initial 1:1 assessment however what we cover in the session will vary depending on what your level, health and goals are.

When do I need to schedule a 1:1 Review?

A 1:1 Review is for the benefit of you, to get the most out of your sessions. We highly recommend a review every four to eight weeks to re-assess your progress, goals and change your program.

What do I wear to an Exercise Class?

Any exercise clothes that you are comfortable moving in. You will be required to wear grippy socks for safety and hygiene. If you are required to wear shoes because of a medical reason, please discuss this with your physiotherapist or AEP.

What else do I need to bring?

Please bring a towel, water bottle and grippy socks for safety and hygiene. Grippy socks can be purchased at reception. Help us reduce land fill by bringing your own water bottle.

How long are classes?

Private or Duet classes are booked as per a normal appointment and can be 25 or 50 minutes. Semi-private classes are 50 minutes.

If you are limited by injury or illness, you do not need to stay for the full duration of the group class. Classes can also be modified if you need to avoid exercising an injured area.

Who is running each exercise session?

Every exercise consultation is Physiotherapy or Exercise Physiology led with additional qualifications in Clinical Pilates or Exercise Science. We consider exercise consultations "shared physiotherapy and AEP appointments" as we are still working on injury prevention, rehabilitation, strength and mobility – from our Physiotherapy or AEP lens. Note that no manual therapy, taping or individual assessment can be performed in a group setting, for fairness and attention for each participant.

When do I book a 1:1 or 2:1 rather than a 4:1 class?

Once you have your initial 1:1 consultation, you and your Physiotherapist or Exercise Physiologist will discuss the best course of action depending on your goals and physical fitness. It may be that you will benefit from some 1:1 or 2:1's prior to joining the classes.

Likewise, if you are finding the program challenging and just require some more 1:1 attention, you can have a few 1:1's for some more personalised assistance prior to returning to the classes. Or you can keep doing 1:1's if you prefer! Your Pilates journey is up to you!



GENERAL QUESTIONS

There are many studios that offer Clinical Pilates. Why should I come to Prana?

Our Clinical Pilates classes are all run by experienced Physiotherapists and Exercise Physiologists that have in depth knowledge of injury rehabilitation, prevention and how to transition you back safely to long life sport and activities. Every patient has a tailored program that works on their goals and our classes are a maximum of 4 patients per instructor. This means you will always have assistance when you need it and will be constantly challenging and trying new things rather than just following a class program where everyone does the same thing.

CLINICAL QUESTIONS

I'm pregnant, am I safe to exercise?

We recommend consulting your obstetrician or GP to confirm that it's safe for you to exercise and to identify any specific considerations or contraindications. Once you have clearance, we tailor all exercise sessions to your individual needs, ensuring your program is safe and suitable throughout your pregnancy.

I'm postnatal, am I safe to exercise?

If you have clearance from your obstetrician or general practitioner, we will ensure exercises safe for the post-natal period. This is essential prior to commencing exercise early than 6 weeks post natal.

I've had spinal or orthopaedic (shoulder, hip, knee etc) surgery, am I safe to exercise?

Absolutely. If you have been given clearance by your surgeon to commence physiotherapy rehabilitation or exercise physiology, these individualised classes can be a fantastic supplement to 1:1 physiotherapy or exercise physiology consultations and home exercises. We even tailor your Pilates to tackle the specific functional challenges that you will be facing for your particular surgery and the Pilates sessions can become part of your rehabilitation.

I have tried clinical pilates and other exercise groups before and my symptoms flared up. I want to exercise but I'm not sure if this is for me?

Our Clinical Pilates classes are tailored by our Physiotherapists and Exercise Physiologists to your needs, goals and limitations. We commonly find that classes are well tolerated as we work closely with each person with their bespoke program. Your session will be paced to your needs.

I have no injuries or health concerns, can I still join in for health and performance?

Absolutely, our programs are tailored to your needs. Clinical Pilates work on strength, dynamic posture, flexibility, body awareness and proprioception, which enhances sports performance, prevents injury and improves all components of wellness. We can even tailor the program to reflect specific skills and biomechanics that you will need for your chosen sport.



FEES & REBATES

What are the fees?

Private and duet exercise consultation fees vary depending on the level of experience of the practitioner. Group session packs are available for private, duet and semi-private classes. Please page 13 for full information on our prices.

How do I claim exercise sessions with my private health insurance?

After your session, you will be emailed a receipt to claim with your Private Health insurance if you are eligible for a rebate. Receipts are provided after completion of a casual class, or once you have completed all 10, 20 or 30 sessions of your exercise pack. Please let reception know if you require a receipt. Exercise Physiologist and Physiotherapist codes are different - if you are taking a class with an Accredited Exercise Physiologist, please check your health insurance cover for classes.

Can I claim exercise sessions using Medicare?

If your GP has provided you with a GP Chronic Condition Management Plan, private sessions are eligible for rebate. Duet or semi-private classes are not eligible for Medicare rebate.

How do I purchase my class pack?

All class packs for Clinical Pilates and Strength Bones & Balance can be purchased at reception, by providing credit card details over the phone, or by paying via a secure link using your credit card details, apple pay or direct debit. All class packs are valid for 6 months from purchase date.

I have a permanent class spot reserved. How do I know when I need my next pack?

Reception will send you a courtesy text when you have two sessions remaining on your exercise class pack. They will ask you how you would like to secure your next lot of sessions.

How do I claim pre-paid exercise sessions with my private health insurance?

After you have completed your existing class pack, our reception team will provide you an itemised receipt to claim directly with your Private Health Insurer. At the moment, Private Health Insurers only allow us to claim on the spot sessions that are completed on the same day as claiming.

Can I claim a late cancel fee with my private health insurer, medicare, CTP, Workers Compensation or NDIS?

Private Health Insurance companies, Medicare, CTP, Workers Compensation and NDIS do not provide rebates or refunds for late cancellation fees.



POLICIES

What is your cancellation policy?

If a 1:1 exercise consultation is cancelled with less than 24 hours' notice, full fees will be charged. Prepaid semi-private sessions that are cancelled with less than 12 hours notice, full fees will be charged or a prepaid class deducted. For Monday appointments or classes, notice must be given by 12pm Saturdays. We understand that we live busy and often unpredictable lives, however to ensure we are fair and consistent with all clients no exceptions will be made to our Cancellation Policy.

What is your COVID and Influenza policy?

We ask that you do not attend the practice if you have any cold or flu symptoms, if you have tested positive for Covid-19, influenza or any other respiratory infection. For those who are well and attending the practice, mask wearing is optional. Touch points and surfaces are regularly cleaned. We ask that you bring your own towel, drink bottle and clean grippy socks.

What is the etiquette for a Clinical Exercise Class at Prana Physiotherapy & Health?

- Please remove your shoes if you are using the Pilates Equipment or exercise mats, and leave them on the shelves near the entry.
- Please bring your own water and a towel.
- Please arrive no earlier than 5 minutes before your appointment. If you are earlier than this, please wait in our main reception area in Suite 24.
- Grippy socks must be worn for safety and hygiene on the equipment. These may be purchased at reception.
- Please do not wear jeans, belts or clothing that may damage equipment. Be mindful of your rings or jewellery which may damage the vinyl on the machines.
- Please leave your belongings on the shelves near the entry. Please do not bring any valuables.
- Please tie up your hair, as long hair can get caught in springs and the reformer wheels.
- No hands on treatment will be provided during a semi-private exercise session. If you require specific advice, treatment, hands-on or taping, please book a 1:1 session with one of our Physiotherapists exercise physiologists.
- Please refrain from eating or drinking in the pilates studio (with the exception of water, unless you have to due to a medical condition).
- Please refrain from taking phone calls in the Exercise Studio and ensure your phone is on silent.
- Please be mindful of fellow clients who may be concentrating on their rehabilitation.
- Do not commence any exercise until instructed by your Physiotherapist or AEP. Your Physiotherapist or AEP will set up your equipment for your safety.

Can I bring my baby or child to my appointment or Clinical Exercise group session?

Babies who are sleeping or happy to rest on the floor, or children happy to sit and read, draw or be on a device, are more than welcome to join class. There are many dangers and hazards in the studio, so we ask that any baby, toddler or child who may be mobile in the studio refrain from attending. You may be asked to leave if your child is at risk of injury to themselves.

Can I bring my dog to my appointment or Clinical Exercise group session?

Unfortunately we have a no animal policy as many dogs/pets can be very disruptive to the focus of the class. If you have a therapy or assistance dog, please let us know in advance so our clinical dog Winnie the Whippet can be absent from the studio.



CONTACT US



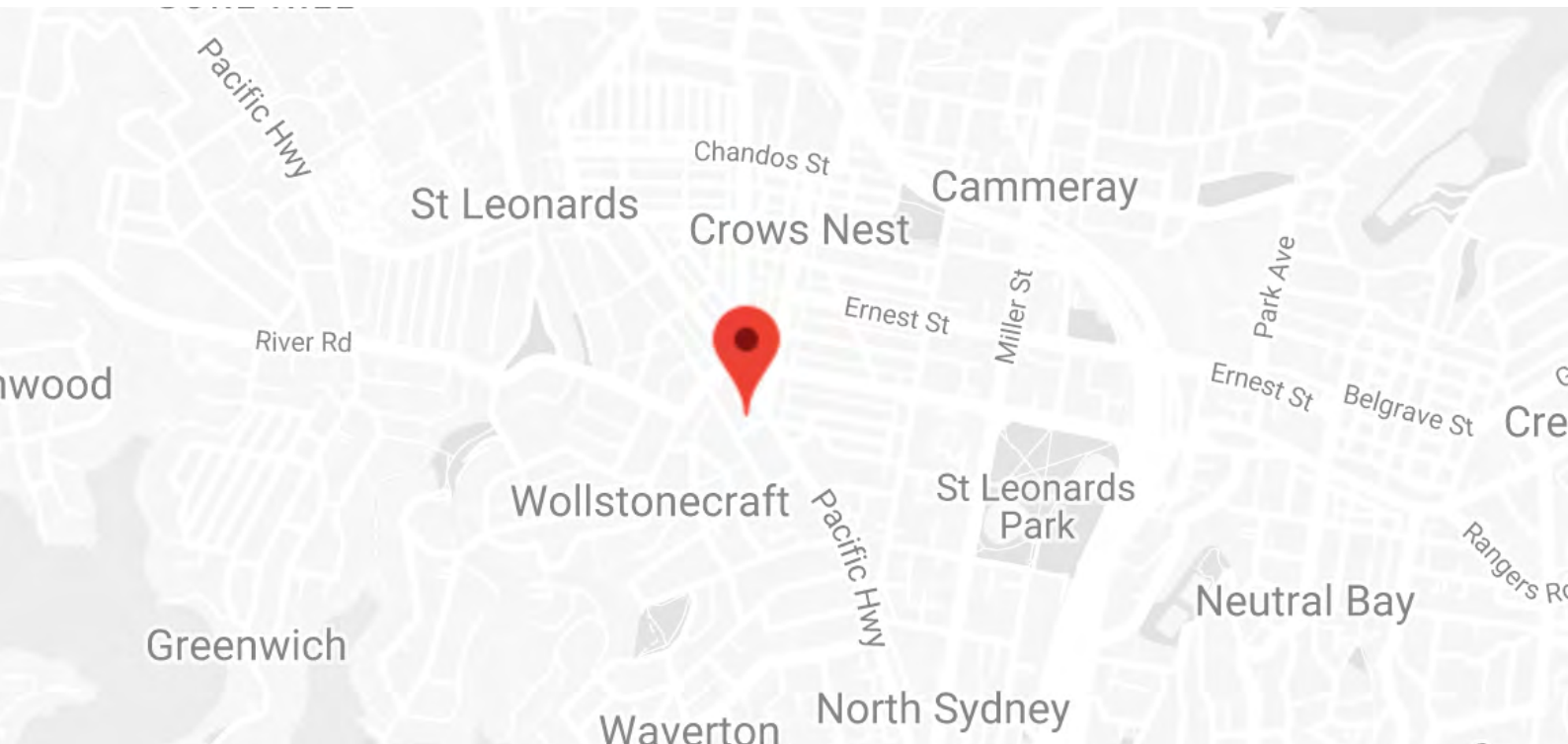
Ground Floor, Suite 24
272 Pacific Highway
Crows Nest NSW 2065



P (02) 9436 2565
F (02) 9436 2524



reception@pranaphysio.com.au
www.pranaphysio.com.au



OPENING HOURS

Mon - Thurs 7am - 7pm

Friday 7am - 4pm

Saturday 7.30am - 1pm

Sunday CLOSED

This information is correct as of the 5th December 2025. We are always updating our services and policies to be able to provide the highest quality care and experience. Have a chat with our friendly team to make sure you are reading the most up to date information. Thank you for your understanding & we look forward to helping you live your best life.